

# Major Scales: Full Range

Here are the 12 major scales extended to the full range of your instrument. Professional level playing may extend higher, but the ranges below are expected for high school and college auditions.

C Major (Concert B-flat) - 2 octaves



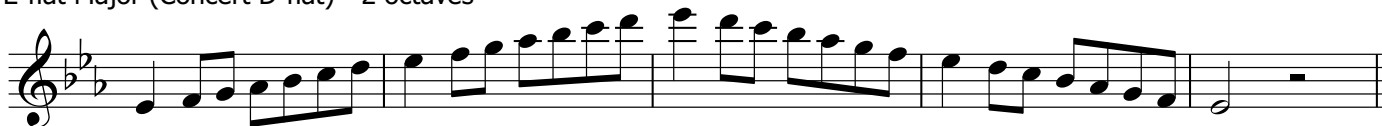
F Major (Concert E-flat) - 2 octaves



B-flat Major (Concert A-flat) - 2 octaves



E-flat Major (Concert D-flat) - 2 octaves



A-flat Major (Concert G-flat) - 1 octave



D-flat Major\* (Concert B) - 2 octaves

\*The enharmonic version of this scale is C-sharp Major (next page)



F-sharp Major\* (Concert E) - 2 octaves

\*The enharmonic version of this scale is G-flat Major (next page)



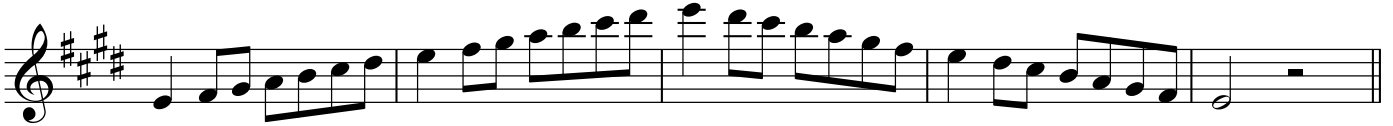
## Major Scales: Full Range

Tenor Saxophone

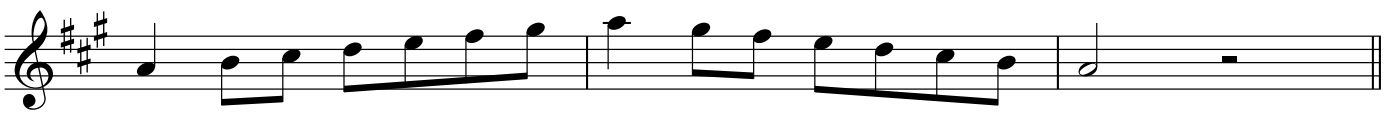
B Major (Concert A) - 2 octaves



E Major (Concert D) - 2 octaves



A Major (Concert G) - 1 octave



D Major (Concert C) - 2 octaves



G Major (Concert F) - 1 octave



## Enharmonic Scales

C-sharp Major *Enharmonic with D-flat*G-flat Major *Enharmonic with F-sharp*