

CLARINET
BASS CLARINET

Garnet Valley Band Mid-Year Assessment 2022

You may submit as one continuous video, or 2 separate videos for Scales and Etude

PART 1 - SCALES

Say the name of the scale, then play it.

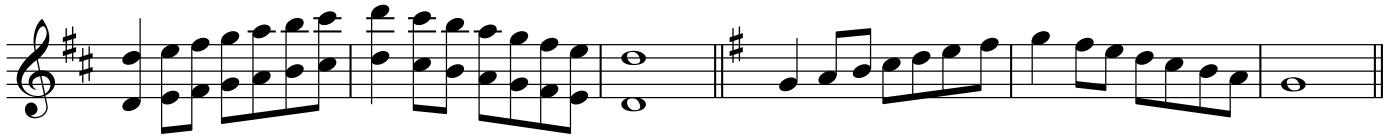
Each scale should be played tongued, at a minimum tempo of 110 b.p.m.

Bass Clarinet can play lower octave option

(Faster tempos will be scored higher only if played accurately and cleanly)

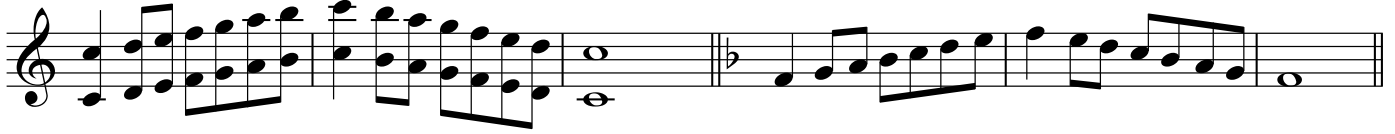
D Major

G Major



C Major

F Major



Chromatic



PART 2 - ETUDE

The goal of this etude is to demonstrate your ability to play with good tone and intonation, and smooth legato style.

Tempo - 82 b.p.m.

